

## Modified MRC Dyspnea Scores

- 0 I only get breathless with strenuous exercise
- 1 I get short of breath when hurrying on the level or walking up a slight hill
- 2 I walk slower than people of the same age on the level because of breathlessness, or I have to stop for breath when walking on my own pace on the level
- 3 I stop for breath after walking about 100 meters or after a few minutes on the level
- 4 I am too breathless to leave the house, or I am breathless when dressing or undressing

Complications of the Zephyr Endobronchial Valve treatment can include but are not limited to pneumothorax, worsening of COPD symptoms, hemoptysis, pneumonia, dyspnea and, in rare cases, death.

1 Adapted from Global initiative for Chronic Obstructive Pulmonary Disease (GOLD) Global Strategy for the Diagnosis, Management and Prevention of COPD

2 Criner, G.J, Sue, R, Wright, S, Dransfield, M, Rivas-Perez, H, Wiese, T & Morrissey, B. A multicenter randomized controlled trial of Zephyr® endobronchial valve treatment in heterogeneous emphysema (LIBERATE). Am J Respir Crit Care Med, 2018; 198(9), 1151-1164.

Brief Statement: The Pulmonx Zephyr® Endobronchial Valves are implantable bronchial valves indicated for the bronchoscopic treatment of adult patients with hyperinflation associated with severe emphysema in regions of the lung that have little to no collateral ventilation. The Zephyr Valve is contraindicated for: Patients for whom bronchoscopic procedures are contraindicated; Patients with evidence of active pulmonary infection; Patients with known allergies to Nitinol (nickel-titanium) or its constituent metals (nickel or titanium); Patients with known allergies to silicone; Patients who have not quit smoking; Patients with large bullae encompassing greater than 30% of either lung. Use is restricted to a trained physician. Prior to use, please reference the Zephyr Endobronchial Valve System Instructions for more information on indications, contraindications, warnings, all precautions, and adverse events.

Caution: Federal law restricts this device to sale by or on the order of a physician.

**Pulmonx Corporation**  
700 Chesapeake Drive  
Redwood City, CA 94063  
© 2019 Pulmonx Corporation or its affiliates. All rights reserved. All trademarks are property of their respective owners.  
D0730EN\_B – August 2019 Referring Physician Pocket Guide

zephyr®  
valve

COPD/EMPHYSEMA



The Zephyr Valve  
is Proven to Help  
Emphysema Patients Breathe  
Easier, Do More and Enjoy Life

Find out if it might be right for your patients who are not receiving adequate symptom relief with optimal medical management alone.

# Key Referral Criteria

- Confirmed diagnosis of COPD
- Non-smoking or willing to quit smoking
- FEV<sub>1</sub> of 50% of predicted or less
- Breathless despite optimal medical management (mMRC≥2)

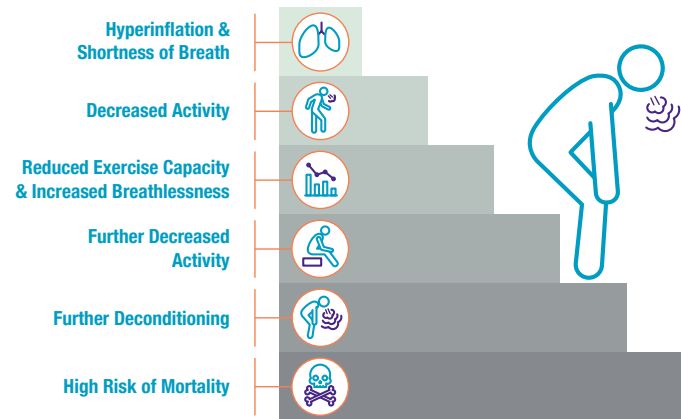


## Once referred an interventional pulmonologist will confirm:

- Diagnosis of severe emphysema
- Presence of hyperinflation (RV≥175% predicted)
- Confirmation the target lobe has little to no collateral ventilation

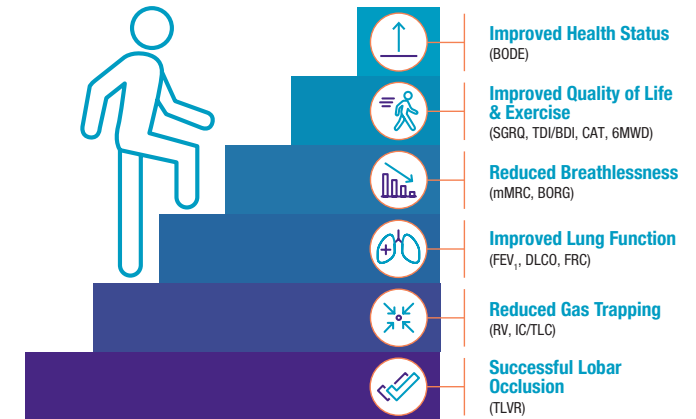
# Disease Progression

Patients with severe emphysema often experience a downward spiral of symptoms, with reduced activity leading to further increased shortness of breath.<sup>1</sup>



# Clinical Benefit of Zephyr® Valve Treatment

Treatment with Zephyr Valves has been clinically proven to improve breathlessness, exercise capacity, and patient-reported quality of life.<sup>2</sup>



**>15,000**  
patients treated globally

A new treatment paradigm for severe emphysema. Included in guidance documents worldwide including GOLD and NICE.